



wnproperties.co.uk

Ardleigh Lodge, Hutton Road Shenfield

WN
PROPERTIES

Ardleigh Lodge Shenfield

£280,000

This beautifully presented one-bedroom apartment with garage, situated on the second floor and built in 2013, offers spacious and well-appointed living accommodations near the heart of Shenfield. The open-plan design seamlessly integrates the lounge, dining, and kitchen areas, which come equipped with integrated appliances. The bedroom boasts fitted wardrobes and a charming feature oriel window. Additional highlights include a modern bathroom and a hallway with skylight window, enhancing the sense of space and light. Underfloor heating, Juliet balcony and a garage further enhance the appeal of the property that also includes two communal parking permits. There is also a communal indoor refuse storage area, along with a dedicated built in storage cupboard. Located very near on Shenfield Broadway, residents can take advantage of an exceptional range of shops, bars, and restaurants, as well as convenient access to the mainline station, which offers a fast and frequent service to London, including the Elizabeth Line to the West End and Heathrow Airport. EPC C.



Communal Entrance

Video entry via double glazed door to communal hall with Amtico flooring, oak balustrade to carpeted staircase rising to second floor. meter cupboards, door to refuse storage area.

Entrance Hallway

Oak entrance door, attractive oak style Amtico flooring with underfloor heating and wall mounted thermostat,

cupboards housing underfloor heating boiler and electrics. Feature skylight window, oak doors to:

Lounge/Dining/Kitchen 17' 9" x 14' 10" (5.41m x 4.52m)

Superb area with Amtico flooring and underfloor heating, Sonos speaker system, double glazed door to Juliet balcony and wall mounted TV point. Space for dining table and chairs. Well

fitted kitchen area fitted with beige coloured base and wall cabinets complimented by granite work surface incorporating one and a half bowl inset sink and waste disposal. Slimline integrated dishwasher and Hotpoint washer/dryer. Built in Neff oven and ceramic hob with Elica pull out cooker hood above. Integrated fridge/freezer and under cabinet lighting with additional LED lighting above the kick plate. Window to side.

Bedroom One 12' 3" x 12' 0" to rear of wardrobes (3.73m x 3.65m)

Fitted wardrobes, feature Oriel window to side with deep window ledge and underfloor heating with wall mounted digital thermostat.

Bathroom

Duravit fitted suite complimented by Porcelanosa tiled walls and floor with underfloor heating. Shower bath with glass screen and shower over, wall mounted semi pedestal wash hand basin and mixer tap and close coupled w.c. Chrome heated towel rail, extractor fan and shaver point concealed in mirror fronted bathroom cabinet. Window to rear.



Externally

Communal gardens are mainly laid to lawn with established flower and shrub borders, side access to Refuse Storage room with allocated storage cupboard, fitted bike rack and door to communal hallway.

Parking

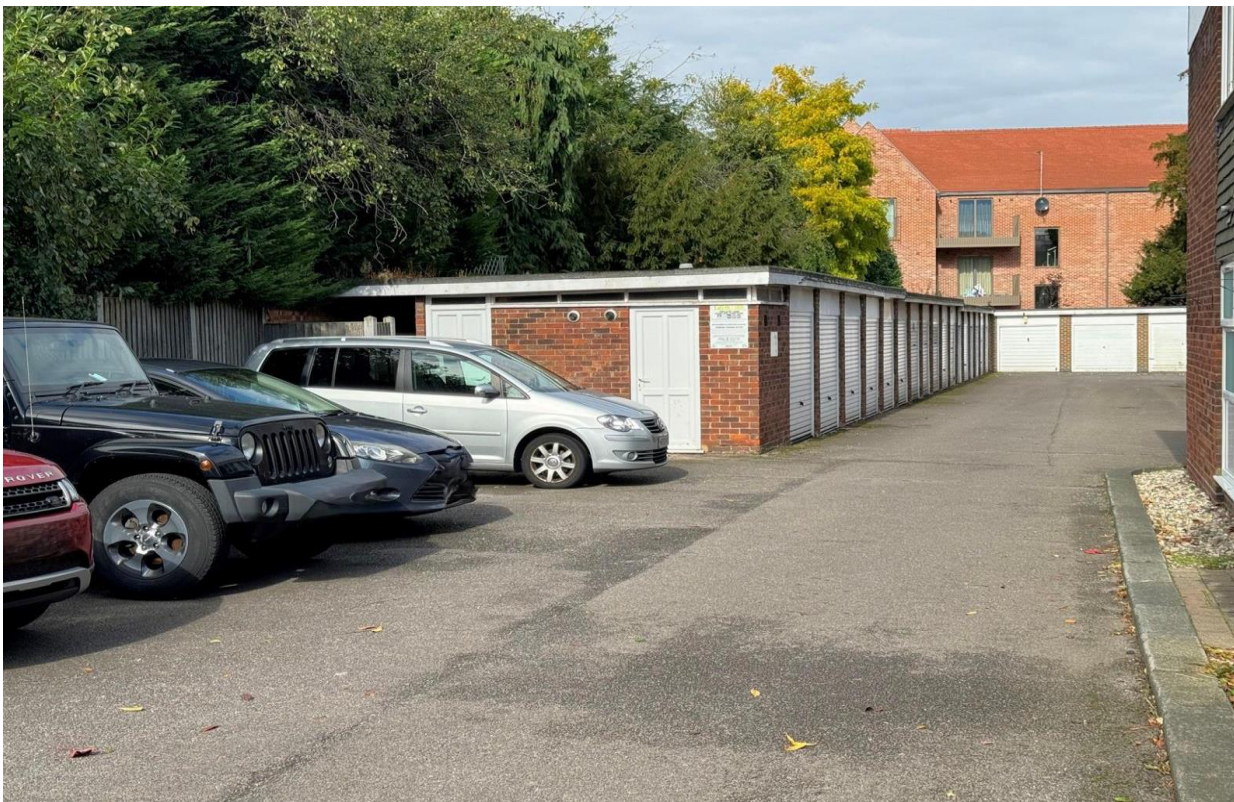
Two permits for communal parking area and garage situated in block nearby.


Agents Note

Tenure - Leasehold 125 years from June 2013.

Ground Rent £250 per annum.

Service charge £2410 per annum



Energy Efficiency Rating		
	Current	Potential
Very energy efficient - lower running costs		
(92-100) A		
(81-91) B		
(69-80) C	77	77
(55-68) D		
(39-54) E		
(21-38) F		
(1-20) G		
Not energy efficient - higher running costs		
England, Scotland & Wales	EU Directive 2002/91/EC	

Council Tax Band C

148 Hutton Road
Shenfield
Essex CM15 8NL

01277 225191

admin@wnproperties.co.uk

wnproperties.co.uk



Every effort has been made to ensure the accuracy of these particulars that have been prepared in good faith in conjunction with the vendor and they cannot be guaranteed and should not form part of any offer or contract. We have not checked the existence of relevant permissions, legal ownership, fixtures, fittings and appliances are in working order or fit for purpose. Photographs are for general information and it cannot be inferred that any items shown are included in the sale or within the ownership of the seller and therefore must be verified by your legal representative. No assumptions can be made from any description or image, relating to the type of construction or structural condition. All measurements are approximate, and any drawings or floorplans provided are for general guidance and are not to scale. Consumer Protection from Unfair Trading Regulations 2008 and the Business Protection from Misleading Marketing Regulations 2008.